

NOTES:

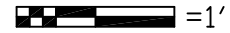
- ① JUNCTION BOXES: J1--NORMAL POWER, J2--EMER. POWER, J3--NURSE CALL/CODE BLUE/TELEPHONE.
- ② GAS PIPING: TYPE L COPPERTUBING, OXYGEN AND AIR--1/2" I.D., VACUUM--3/4" I.D.
- ③ PANEL COLOR: POWDER COATED FINISH THAT MATCHES 'SURF' OR 'PLATINUM GREY'.
- ④ CONDUIT: C1--MONITOR (1-1/4")

MODULAR SERVICES COMPANY 500 EAST BRITTON ROAD
OKLAHOMA CITY, OK. 73114

PROJECT

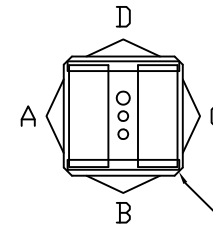
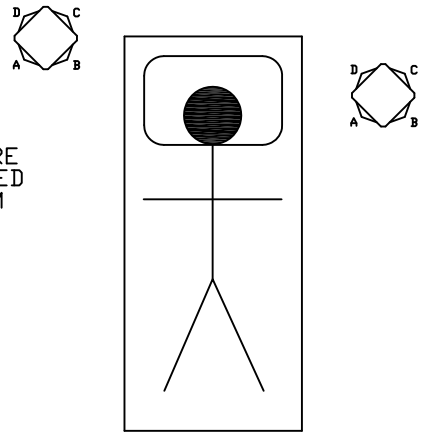
REVISED

OPEN ACCESS COLUMN
MODEL 5700
TWIN TOWER CONFIGURATION

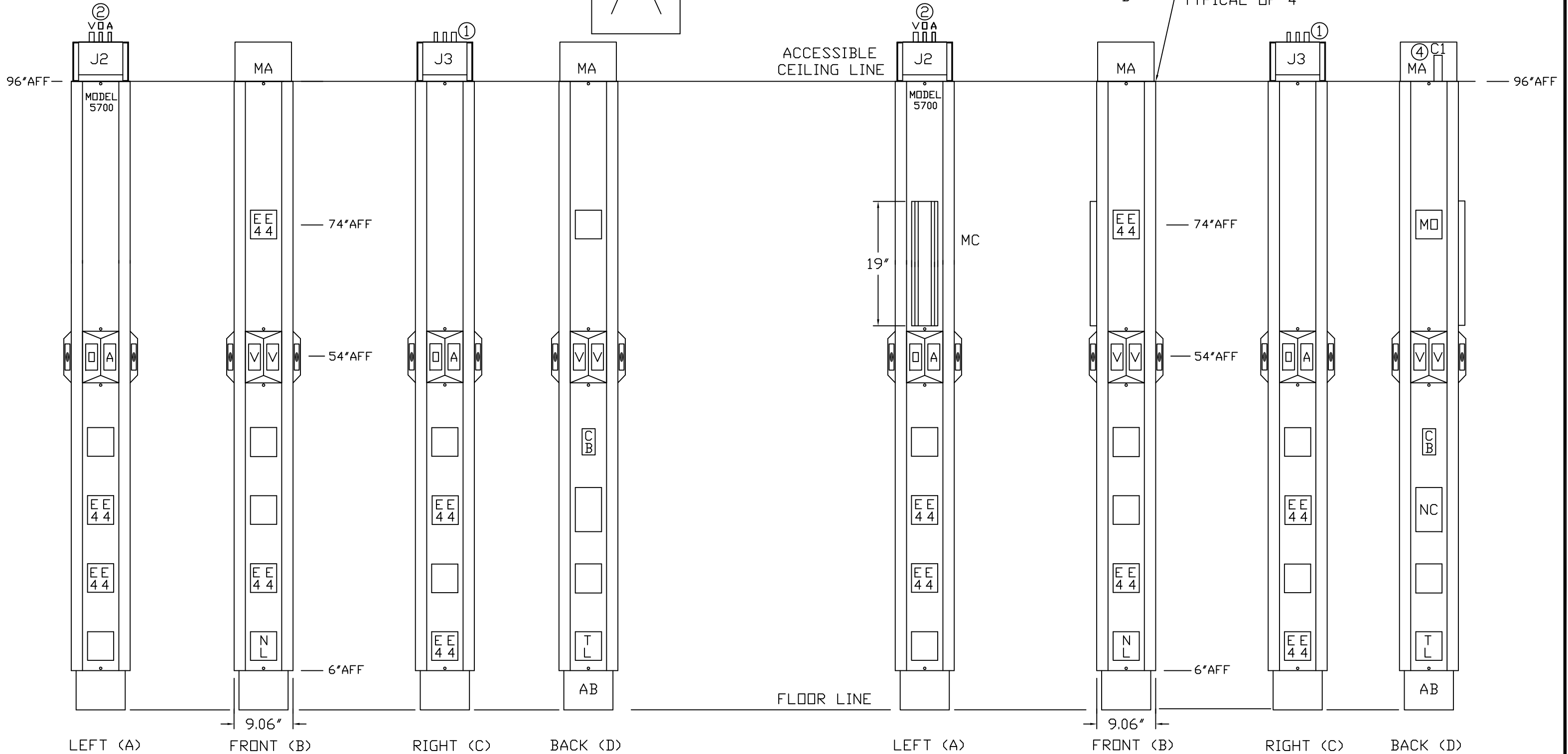
SCALE:  = 1'

DATE _____ DRAWN BY _____ DRAWING # PB-170

24.0"
*24" OR MORE
RECOMMENDED
18" MINIMUM



HIGH ACUITY
-- REQ'D: -- AS SHOWN
-- OPPOSITE



*AFF (ABOVE FINISHED FLOOR)

