

NOTES:


- ① JUNCTION BOXES: J1--NORMAL POWER, J2--EMER. POWER, J3--NURSE CALL/TELEPHONE.
- ② GAS PIPING: TYPE L COPPERTUBING. OXYGEN & AIR--1/2" I.D., VACUUM--3/4" I.D.
- ③ COLOR TO MATCH 'SURF' OR 'PLATINUM GREY'.
- ④ CEILING HEIGHT: 7'6" MIN TO 9'6" MAX. OTHER HEIGHTS ARE SUBJECT TO AN ADDTL CHARGE. CONTACT YOUR SALES REPRESENTATIVE FOR DETAILS.
- ⑤ MAXIMUM CONDUIT SIZE FOR DOUBLE-SIDED UNITS IS 3/4".

**MODULAR SERVICES COMPANY** 500 EAST BRITTON ROAD  
OKLAHOMA CITY, OK. 73114

PROJECT \_\_\_\_\_

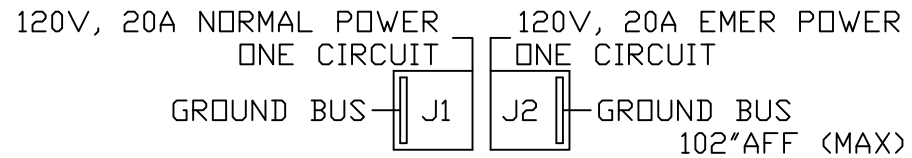
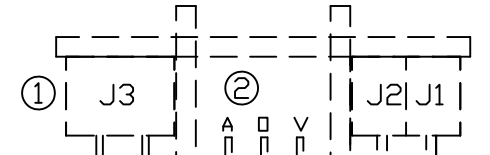
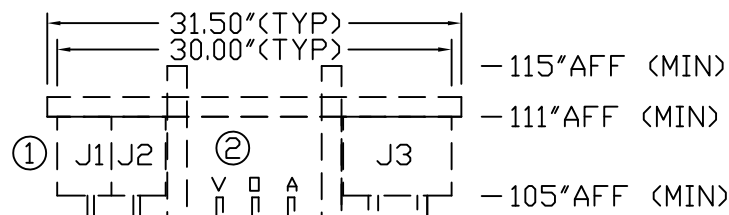
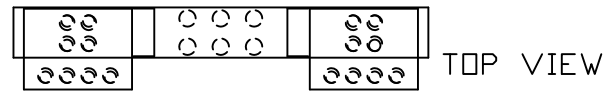
REVISED \_\_\_\_\_

DUAL PROFILE® UNIT  
SINGLE SIDED, SEMI-RECESSED  
MODEL 7012A (SP)

SCALE:  = 1'

DATE \_\_\_\_\_ DRAWN BY \_\_\_\_\_ DRAWING #  
PB-172

SERVICES TO BE REVERSED  
ON OPPOSITE HAND UNITS



ACCESSIBLE  
CEILING LINE  
90" AFF (MIN)



STRUCTURAL  
WALL

3.625"

2.5"

1"

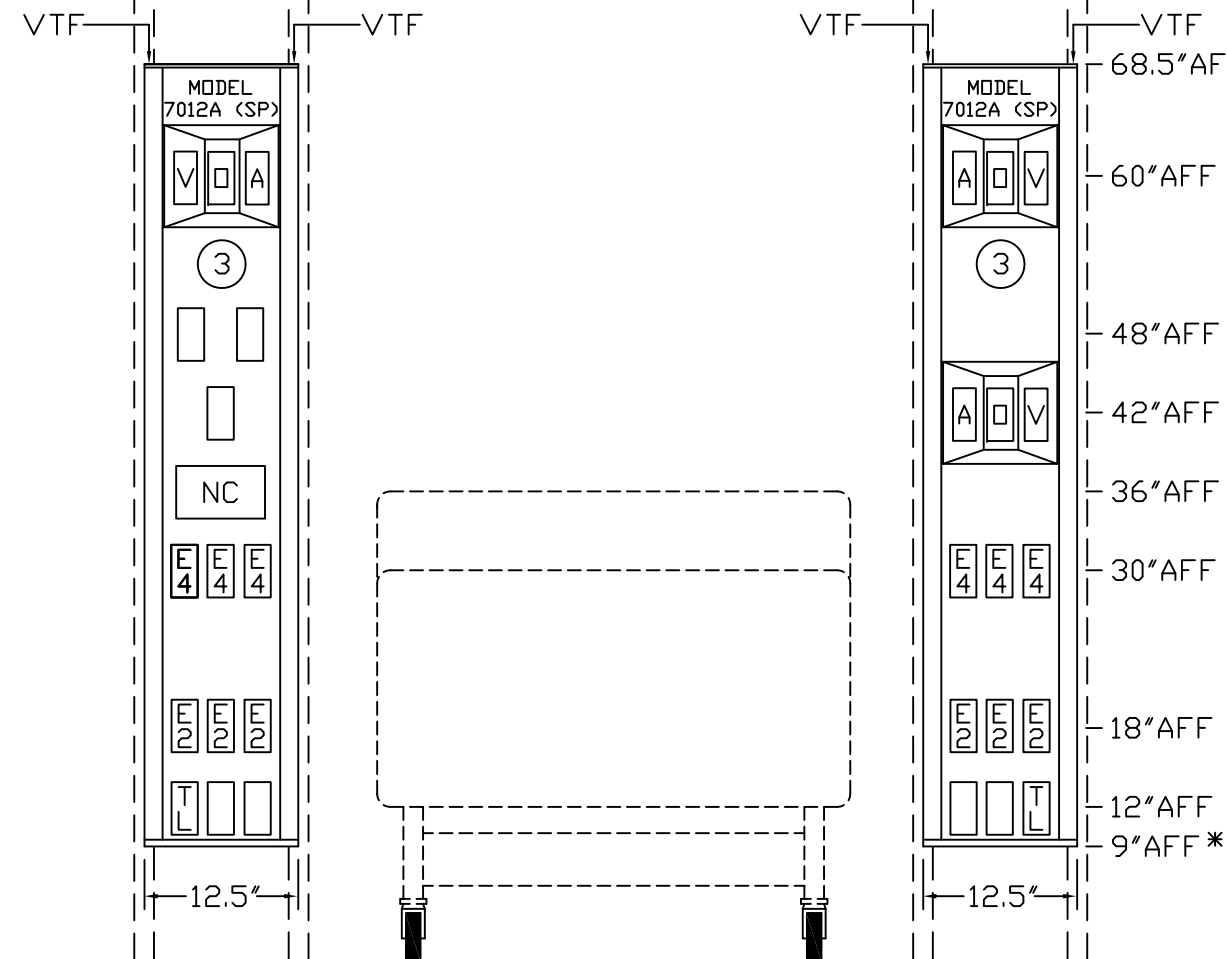
3.2"

TYPICAL OF TWO SERVICES  
TO BE REVERSED ON OPP.  
HAND UNITS.

CIRCUIT 1  
EMERGENCY POWER



CIRCUIT 1  
NORMAL POWER



SIDE VIEW

WIRING DIAGRAM  
GROUND WIRING TO BE #10  
GREEN STRANDED COPPER

FLOOR LINE  
\* AFF (ABOVE FINISHED FLOOR)

MEDIUM ACUITY  
-- REQ'D: -- AS SHOWN  
-- OPPOSITE

