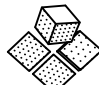

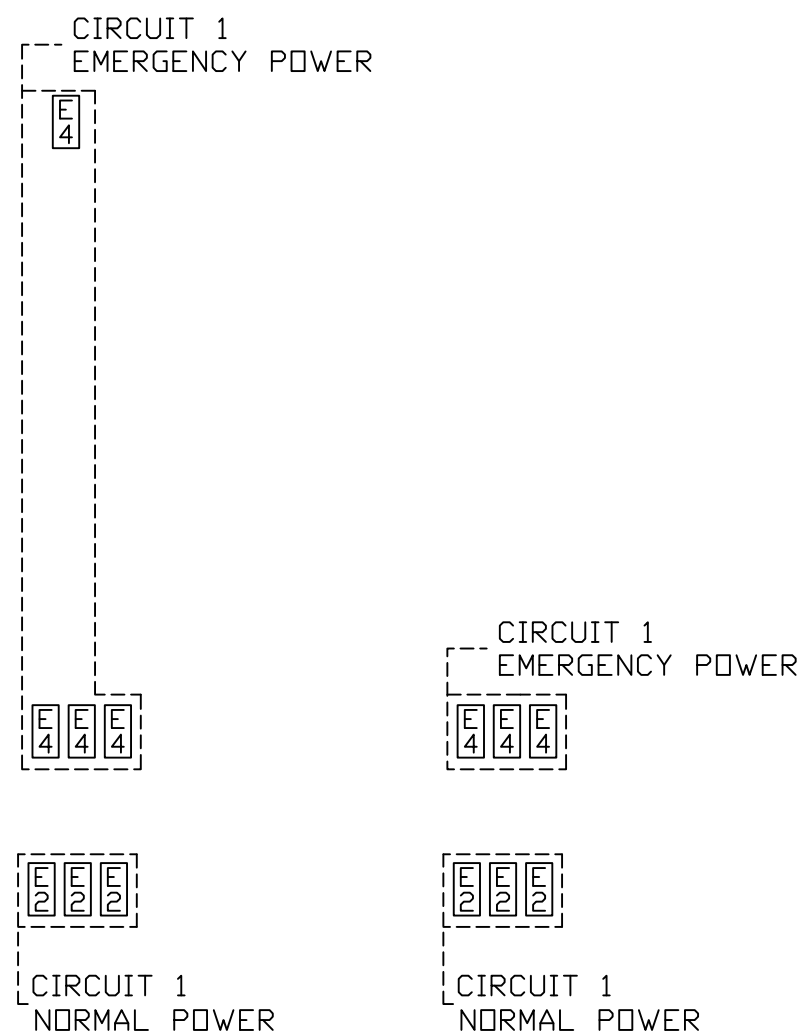
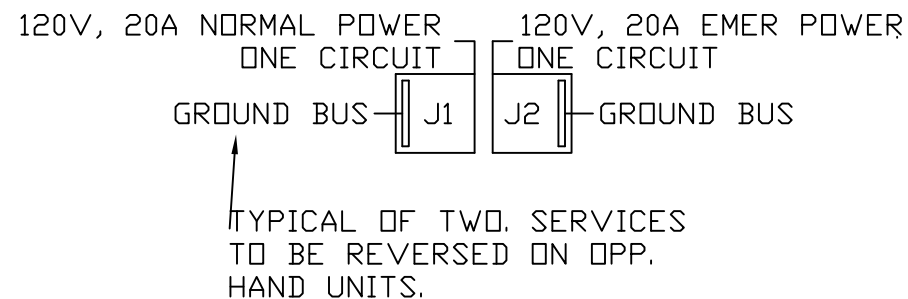


NOTES:

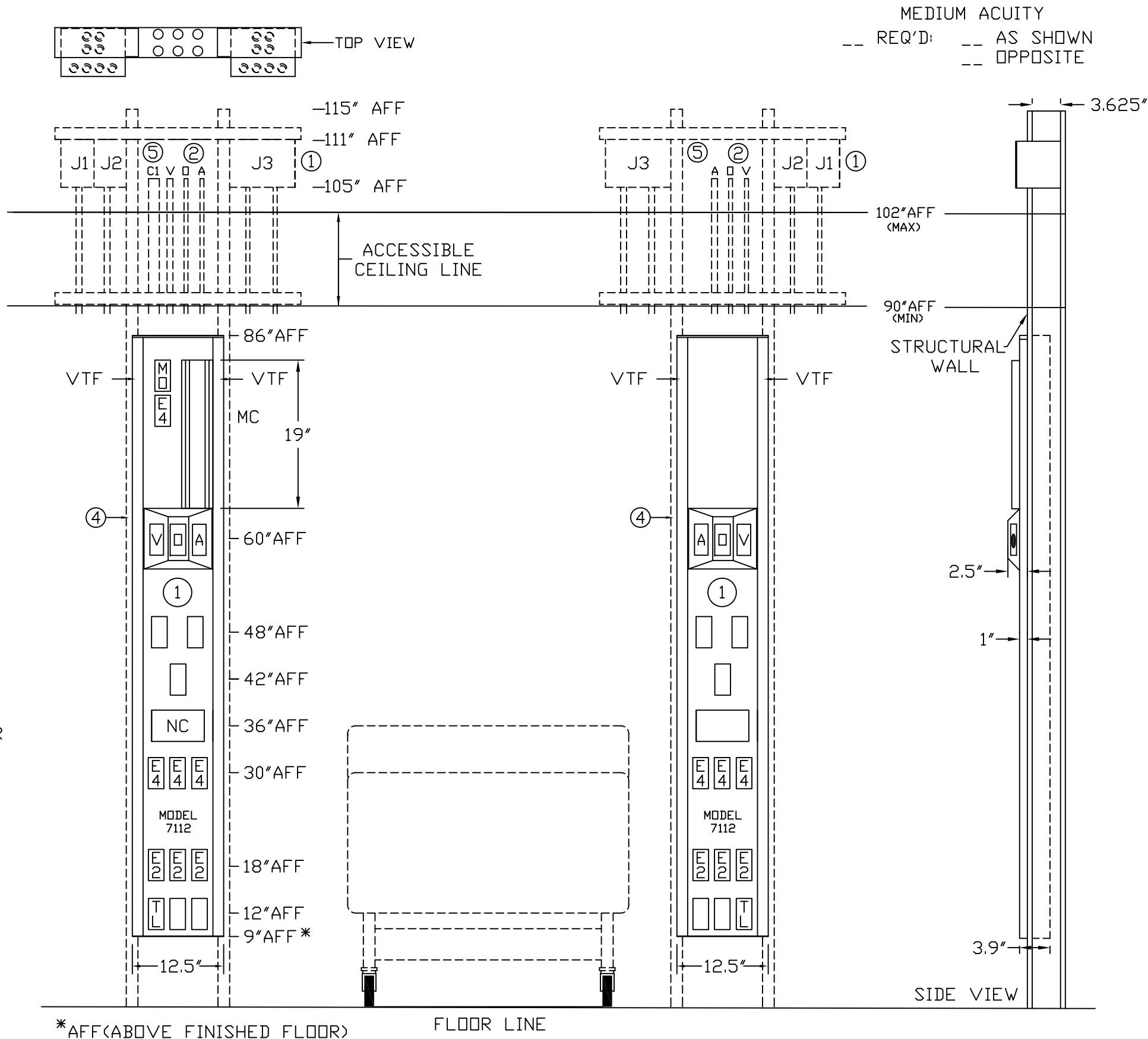
- ① JUNCTION BOXES: J1--NORMAL POWER, J2--EMERGENCY POWER, J3--NURSE CALL/TELEPHONE.
- ② GAS PIPING: TYPE L COPPER TUBING. OXYGEN & AIR-- $\frac{1}{2}$ " I.D., VACUUM-- $\frac{3}{4}$ " I.D.
- ③ ALL POWDER COATED SURFACES WILL MATCH 'SURF' OR 'PLATINUM GREY'.
- ④ ALL INTERIOR STUD FRAMING IS TO FIT A $3\frac{5}{8}$ " METAL STUD WALL WITH A $\frac{5}{8}$ " GYPSUM BOARD FINISH.
- ⑤ EMT CONDUIT: C1--MONITOR OUTPUT ($1\frac{1}{4}$ ").
- ⑥ CEILING HEIGHT 7'6" MIN TO 9'6" MAX OTHER HEIGHTS ARE SUBJECT TO AN ADDITIONAL CHARGE. CONTACT YOUR SALES REPRESENTATIVE FOR DETAILS.

PROJECT	 MODULAR SERVICES COMPANY 500 EAST BRITTON ROAD OKLAHOMA CITY, OK. 73114
	REVISED

EXTENDED PROFILE® UNIT SINGLE SIDED, SEMI-RECESSED MODEL 7112		
SCALE:  = 1'		
DATE	DRAWN BY	DRAWING # PB-114



WIRING DIAGRAM
GROUND WIRING TO BE #10
GREEN STRANDED COPPER



MEDIUM ACUITY
-- REQ'D: -- AS SHOWN
-- OPPOSITE

