

DIMENSIONS ARE FOR REFERENCE ONLY. PLEASE ALLOW ± 0.25' FOR ACTUAL MEASUREMENT.

MODULAR SERVICES COMPANY 500 EAST BRITTON ROAD OKLAHOMA CITY, OK 73114

PROJECT

REVISED

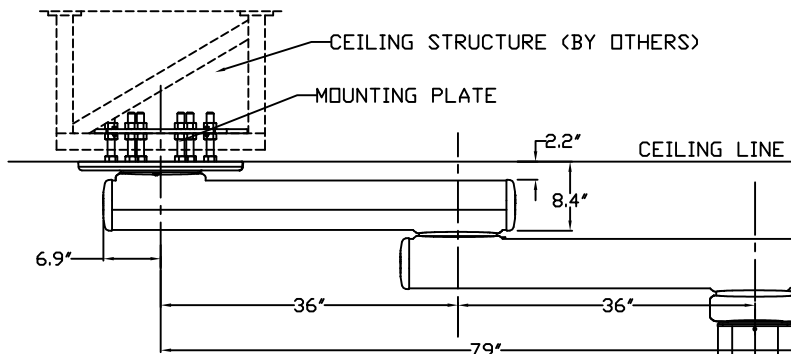
STRATUS® SERIES 5830
MODEL 5832

SCALE: = 1'

DATE _____ DRAWN BY _____ DRAWING # PB-163

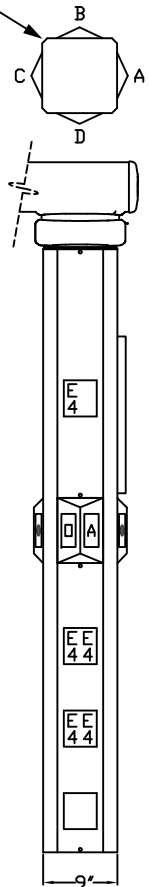
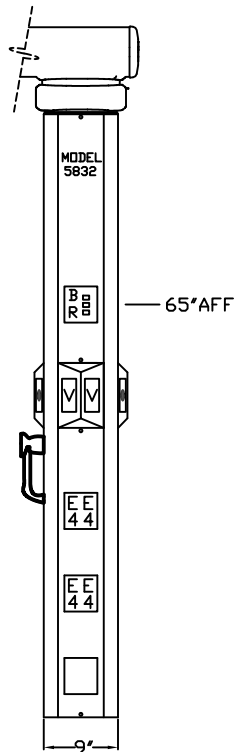
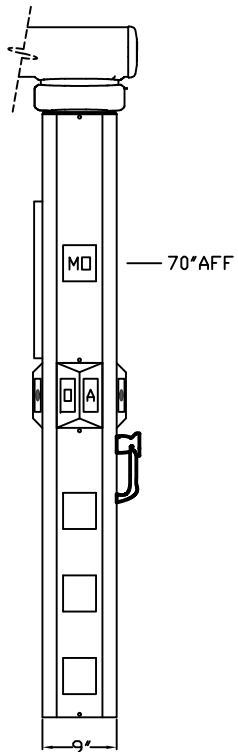
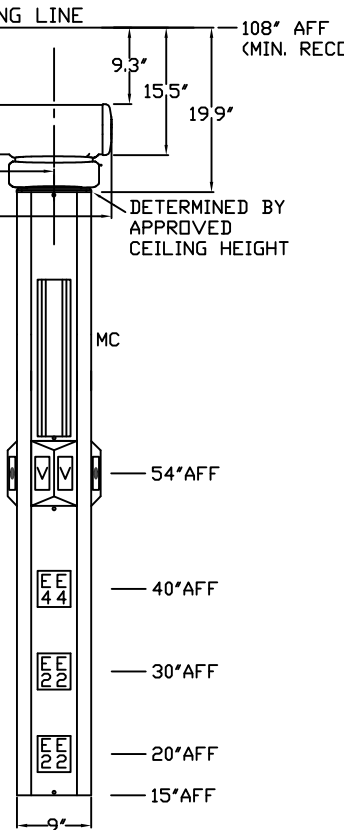
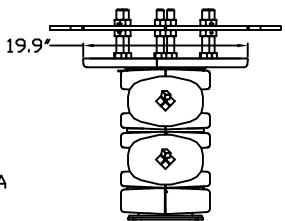
NOTE:
 ① GAS OUTLETS TO BE MSC STANDARD BRAND OUTLET WITH CONNECTION TO MATCH EXISTING HOSPITAL EQUIPMENT

SEE STRATUS INSTALLATION INSTRUCTIONS FOR DETAILS ON MOUNTING COMPONENTS AND ROUGH-IN LOCATION REQUIREMENTS



-- REQ'D: -- AS SHOWN
 -- OPPOSITE

VTT
 1 EA. CORNER
 TYPICAL OF 4



LEGEND		
REQ	SYM	DESCRIPTION
2	O	OXYGEN OUTLET
2	A	AIR OUTLET
4	V	VACUUM OUTLET
4	E2	DUPLEX RECEPTACLE, 8300 IVORY, 20A, 125V, H.G., NORMAL POWER
11	E4	DUPLEX RECEPTACLE, 8300 RED, 20A, 125V, H.G., EMER. POWER
1	MO	MONITOR OUTPUT PROVISION
1	MC	MONITOR CHANNEL ONLY
1	BR	BRAKE RELEASE
4	VTT	VERTICAL EQUIPMENT MOUNTING TRACK, TRIPLE

SIDE A SIDE B SIDE C SIDE D FLOOR LINE

NOTES:

- ① JUNCTION BOXES: J1--NORMAL POWER, J2--EMERGENCY POWER, J3--LOW VOLTAGE (MO).
- ② GAS CONNECTIONS WILL CONSIST OF HOSE CONNECTIONS WITH DISS FITTINGS THAT CONNECT TO ROUGH-IN TEMPLATE DURING INSTALLATION.
- ③ PANEL COLOR: POWDER COATED FINISH TO MATCH FORMICA #923 'SURF'.
- ④ PROVIDE CONDUITS FOR LOW VOLTAGE CABLES WHERE POSSIBLE (MO--1/2" MINIMUM). REQUIRED CABLES WILL BE FIELD INSTALLED IN THE UNIT.



MODULAR SERVICES COMPANY 500 EAST BRITTON ROAD
OKLAHOMA CITY, OK. 73114

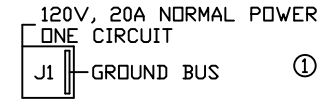
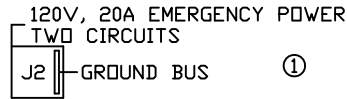
REVISED

STRATUS® SERIES 5830
MODEL 5832

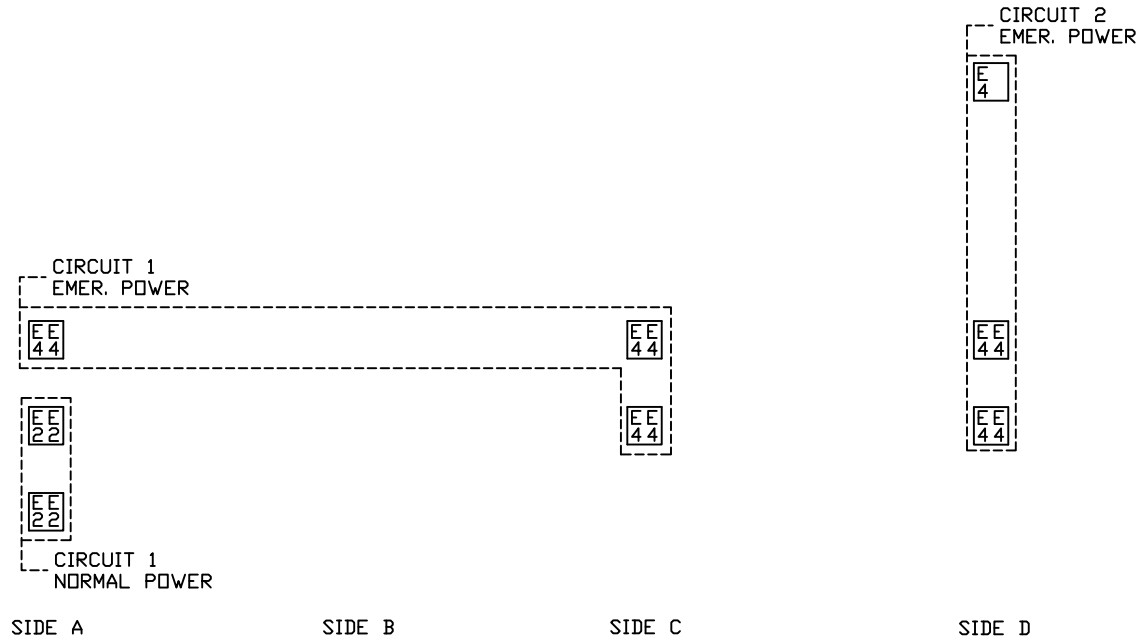
SCALE: =1'

DATE _____ DRAWN BY _____ DRAWING #
LEG163

PROJECT



WIRING WILL BE FIELD CONNECTED TO JUNCTION BOXES (LOCATED ON ROUGH-IN TEMPLATE) DURING INSTALLATION.



WIRING DIAGRAM

GROUND WIRING TO BE #10 GREEN STRANDED COPPER